

# SUNCLOTH® FABRIC COLLECTION



Shown above 17" x 17" Relax pillows in Timberland-Citron, Calypso-Melon, Prism-Citron and Great Gatsby.



1155 Infinity - Tango (C)



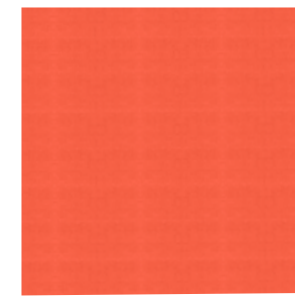
1154 Saxon - Tango (C)



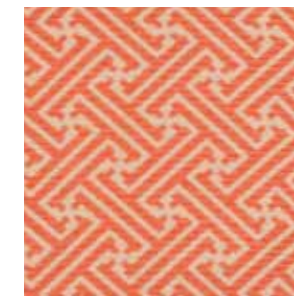
1157 Prism - Mandarin (C)



1156 Casablanca - Mandarin (C)



5415 Melon (A)



1273 Calypso - Melon (B)\*



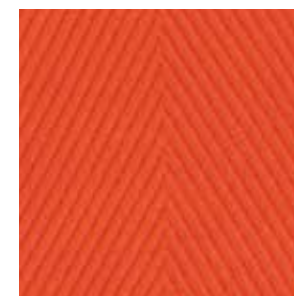
1271 Athens - Melon (A)\*



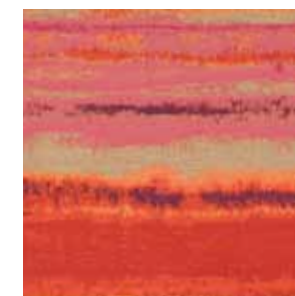
1310 Papyrus - Melon (B)\*



1161 Ophelia - Flame (C)



1162 Chevron Chic - Flame (B)



1275 Monet Sunset (C)\*



1276 Cherry (A)\*



1140 Granada - Helio (C)



1138 Timberland - Helio (C)



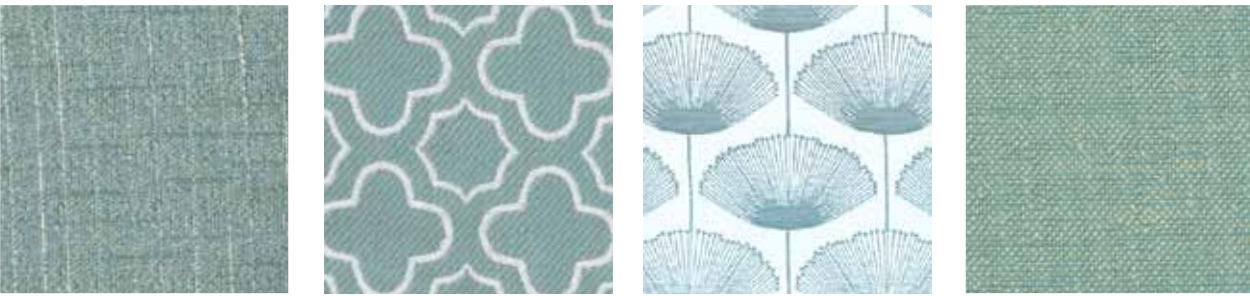
1139 Casablanca - Helio (C)



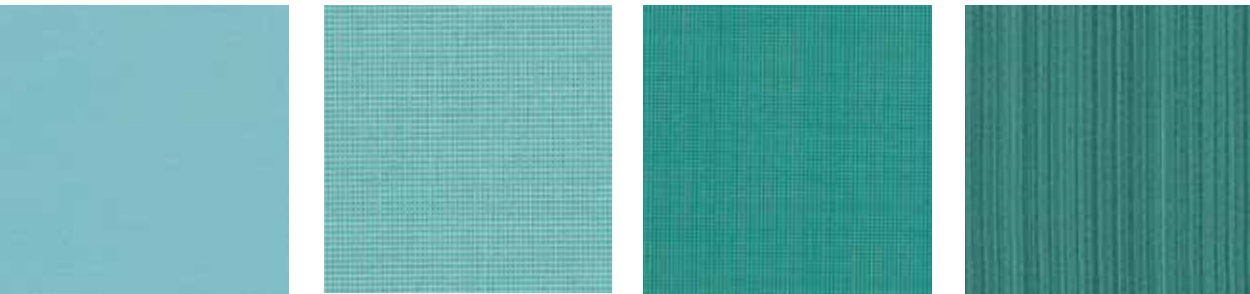
1075 Café Au Lait (A)

\*Represents new selections for the 2015 season.

# SUNCLOTH® FABRIC COLLECTION



1149 Brussels – Spa (C)    1147 Casablanca – Spa (C)    1148 Papyrus – Spa (B)    1043 Aquamarine (A)



726 Pacific (A)    1112 Splash (A)    1096 Poolside (A)    1095 Esprit (A)



5446 Forest Green (A)    1303 Calypso – Forest (B)\*    1302 Athens – Forest (A)\*    1269 Maritime (B)\*



5416 Aruba (A)    1272 Calypso – Aruba (B)\*    1270 Athens – Aruba (A)\*    1309 Papyrus – Aruba (B)\*



1133 Esplanade (A)    1130 Linen Gravel (A)    1058 Summer Grey (B)    820 Morro (A)



782 Bay Blue (A)    1278 Paramount (B)\*    1281 Weathered Glory (B)\*    1277 Neptune (A)\*



5439 Navy (A)    1300 Calypso – Navy (B)\*    1299 Athens – Navy (A)\*    1153 Chevron Chic – Salt (B)



676 High Noon (A)    1158 Dash – Kiwi (C)    1160 Cabana Stripes – Kiwi (C)    1159 Strata – Kiwi (C)

\*Represents new selections for the 2015 season.

\*Represents new selections for the 2015 season.

SUNCLOTH® FABRIC COLLECTION



1282 Weathered Grain (B)\*      1285 Nexus (B)\*      1283 Static (B)\*      1284 Tinsel (A)\*



765 Coronado (B)      1274 Monet Sunrise (C)\*      1279 Palisades (B)\*      1280 Biscuit (A)\*

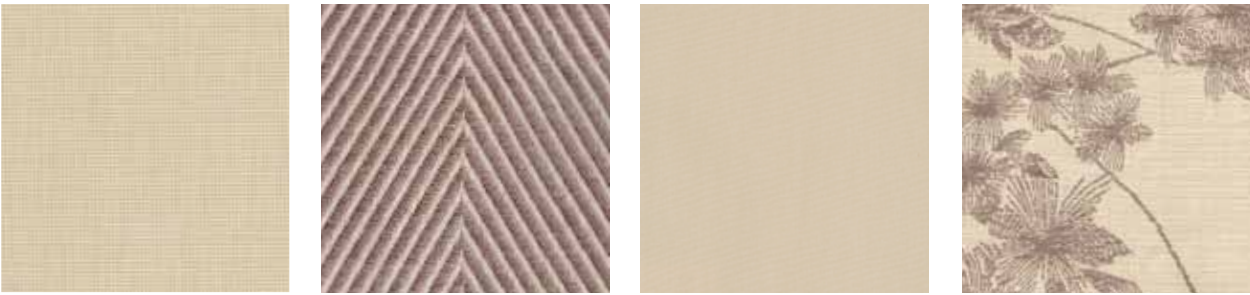


995 Calm (A)      1286 Frontier (A)\*      1267 Great Gatsby (C)\*      1268 Maze Work (C)\*

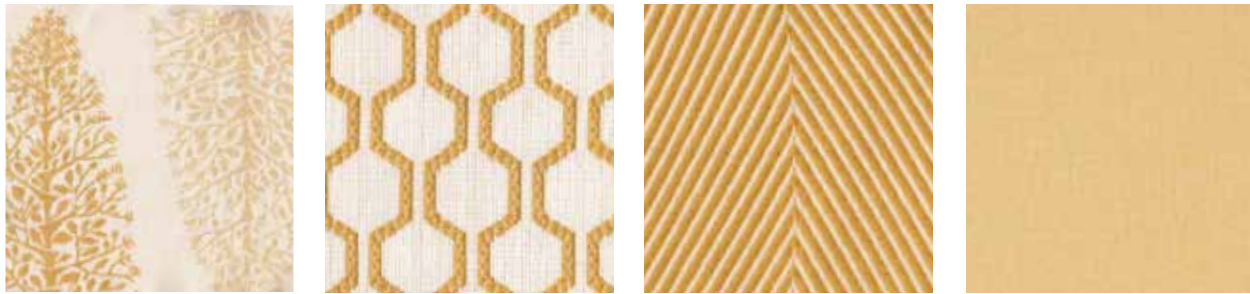


1002 Beach House (A)      1007 Cape Charles (A)      1136 Park Way (A)      1135 Park Lane (A)

\*Represents new selections for the 2015 season.



667 Seashell (A)      1137 Chevron Chic - Helio (B)      827 Oyster (A)      1141 Shinoda - Helio (C)



1151 Timberland - Citron (C)      1150 Prism - Citron (C)      1152 Chevron Chic - Citron (B)      830 Maize (A)



971 Sand Dune (A)      996 Cream (A)      815 Boulder (A)      674 Jakarta (A)



5470 Walnut (A)      1297 Athens - Walnut (A)\*      1298 Calypso - Walnut (B)\*      1134 Park Avenue (A)

\*Represents new selections for the 2015 season.

SUNCLOTH® FABRIC COLLECTION



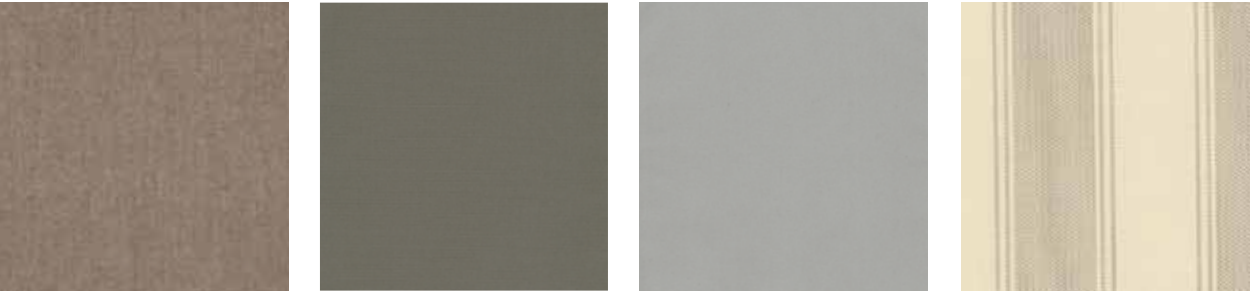
1129 Linen Earth (A)      1077 Moca (A)      1078 Caffè (A)      1076 Cappuccino (A)



1287 Promenade (A)\*      1288 Pavilion (A)\*      1290 Linen Shore (A)\*      1132 Espadrille (A)



1131 Linen Sand (A)      1289 Linen Beach (A)\*      1086 Burnt Willow (C)      1163 Bay Leaf (A)

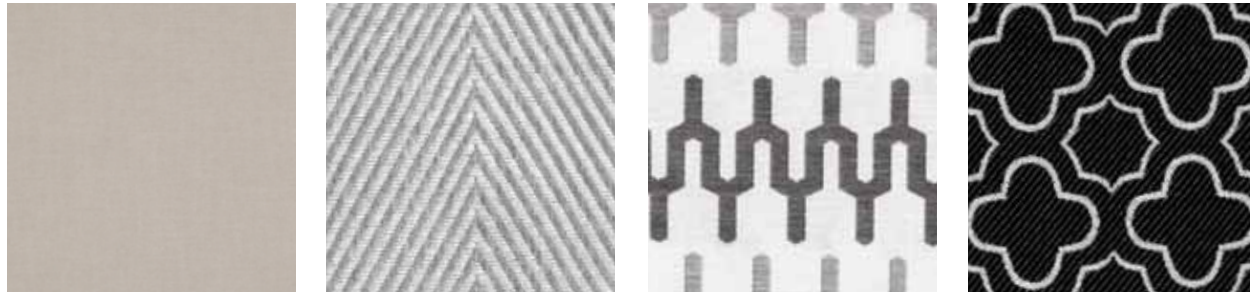


1291 Shale (A)\*      819 Camden (A)      818 Morning Fog (A)      999 Light House (A)

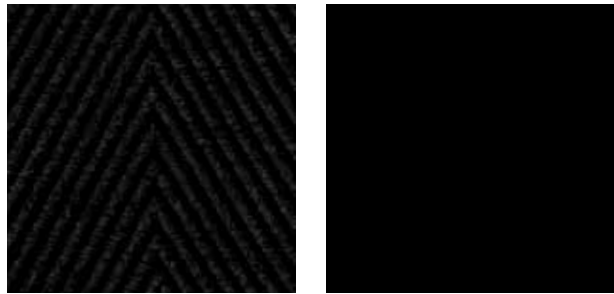
\*Represents new selections for the 2015 season.



998 Cool (A)      5402 Granite (A)      1301 Calypso - Granite\*      1296 Sea Salt (A)\*



1294 Sailor (A)\*      1142 Chevron Chic - Mist (B)      1143 Granada - Mist (C)      1145 Casablanca - Noir (C)



1146 Chevron Chic - Noir (B)      817 Night Sky (A)

\*Represents new selections for the 2015 season.

# VERSATEX® MESH COLLECTION



Shown above Swim lounge chair in Pompeian Gold finish with Caribe sling; pillow in Caffè.



1305 Beach\*

1314 Chesapeake\*

1313 Dune\*

1312 Seal\*



1306 Beach Grass\*

1311 Reef\*

1315 Morro Bay\*

1304 Foster\*



1014 Salt Air

1013 Shimmer

543 Sandpiper

1079 Latte



981 Sandy

1121 Sage

1295 Sailing\*

1307 Shoal\*

\*Represents new selections for the 2015 season.

# VERSATEX® MESH COLLECTION



1080 Coco

545 Caribe

1111 Marine

1292 Keppel\*



560 White Lite

525 Putty

465 Aluminum

1266 Jet\*

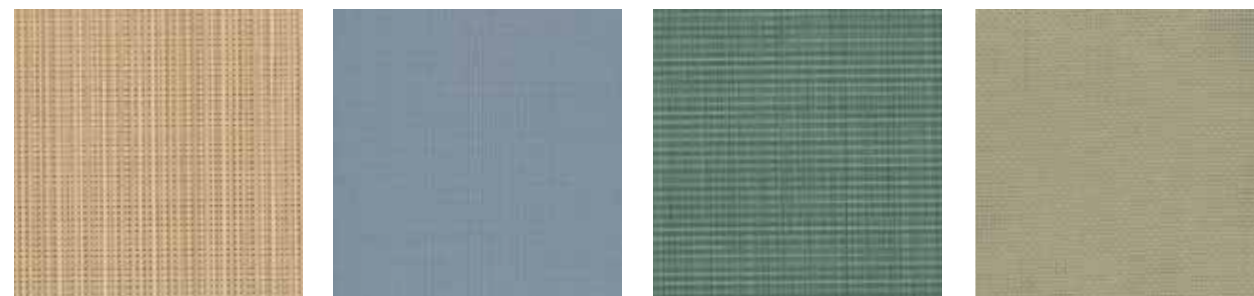


991 Luminous

1105 Sesame

466 Sorrel

524 Greystone

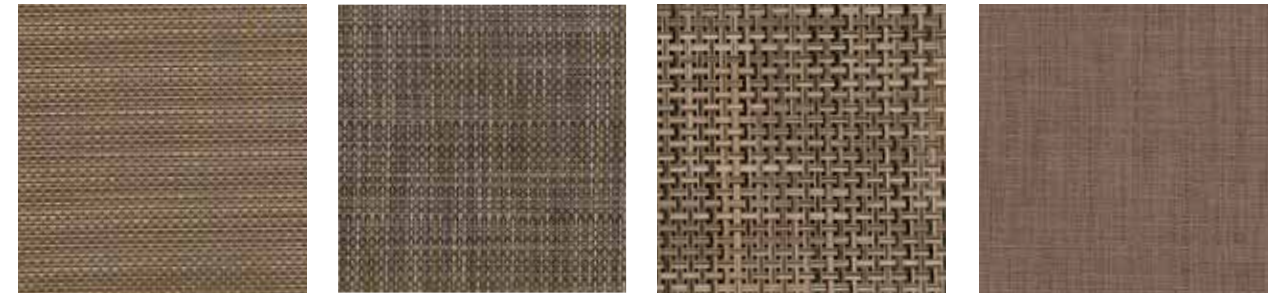


468 Chaparral

501 Stardust

1108 Lagoon

575 Flaxen



467 Bronze

1109 Patina

1051 Kismet

1054 Rustic



1053 Juxt

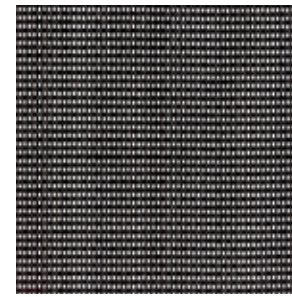
1055 Roxbury

\*Represents new selections for the 2015 season.

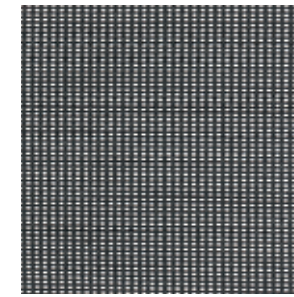


Shown above Still lounge chair in Pure finish with Whisper sling; cushions and pillows in Calm.

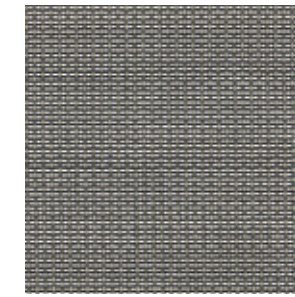
## PARABOLIC® SLING COLLECTION



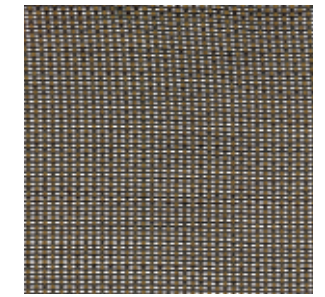
563 Abyss



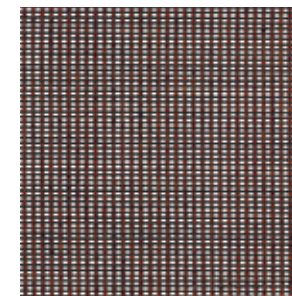
564 Fin



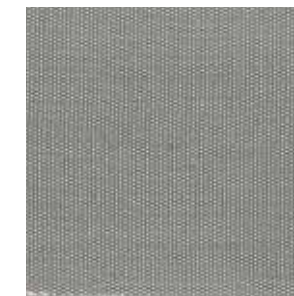
565 Flite



567 Helio



566 Strato



1015 Whisper

## SUNCLOTH® STRAPS



408 Coffee for Flex and Roma (2" w)  
409 Coffee for Kantan and Tamiami (7/8" w)



403 Coco for Flex (2" w)



425 Marine for Flex and Roma (2" w)  
453 Marine for Kantan and Tamiami (7/8" w)



476 Sage for Flex and Roma (2" w)  
475 Sage for Kantan and Tamiami (7/8" w)



477 Coal for Flex and Roma (2" w)  
479 Coal for Kantan and Tamiami (7/8" w)



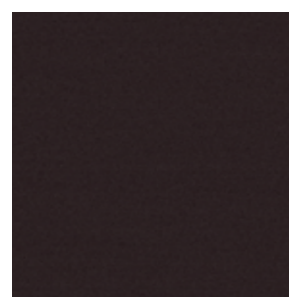
478 Mica for Flex and Roma (2" w)  
480 Mica for Kantan and Tamiami (7/8" w)

# VINYL STRAPS

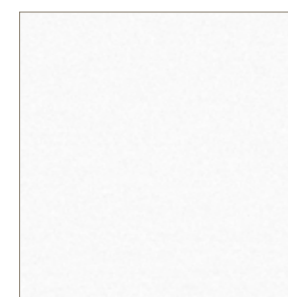


Shown above Tamiami lounge chairs in Yellow finish with Yellow vinyl lace, Hot Pink finish with Hot Pink vinyl lace and Bright Blue finish with Bright Blue vinyl lace.

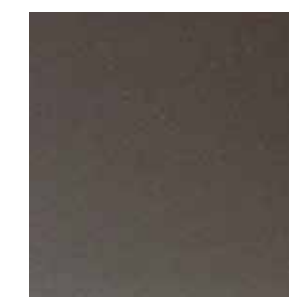
## VINYL STRAP



255 Coffee for Kantan and Tamiami (1")  
257 Coffee for Roma (2")



447 White Lite for Kantan and Tamiami (1")  
449 White Lite for Roma (2")



483 Mica for Kantan and Tamiami (1")  
288 Mica for Roma (2")



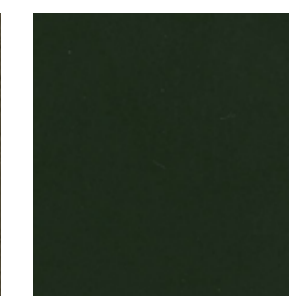
313 Java for Roma (2")



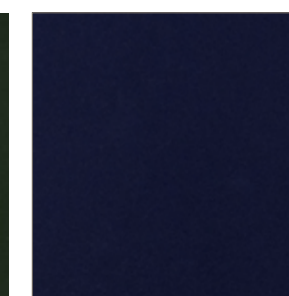
496 Night for Kantan and Tamiami (1")  
353 Night for Roma (2")



363 Versailles for Roma (2")



437 Black Jade for Roma (2")



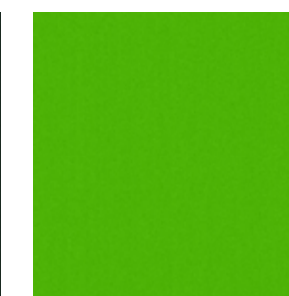
488 Marine for Kantan and Tamiami (1")  
497 Marine for Roma (2")



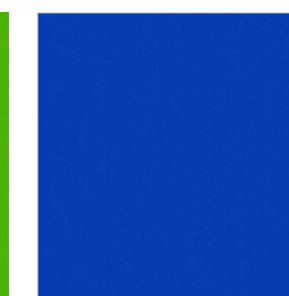
489 Hot Pink for Kantan and Tamiami (1")



490 Dark Green for Kantan and Tamiami (1")



491 Bright Green for Kantan and Tamiami (1")



492 Bright Blue for Kantan and Tamiami (1")



493 Red for Kantan and Tamiami (1")



494 Orange for Kantan and Tamiami (1")



495 Yellow for Kantan and Tamiami (1")



SMOOTH

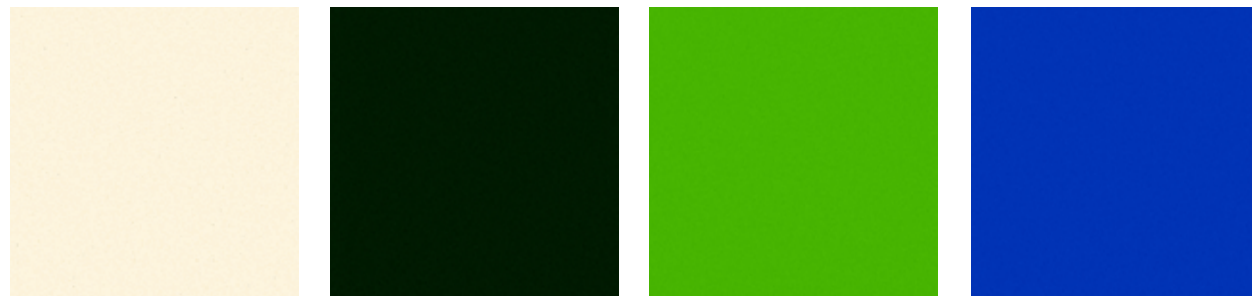


55 White Lite

89 Titanium

113 Mica

14 Black Jade



156 Pure

084 Dark Green\*

159 Bright Green\*\*✓

189 Bright Blue\*\*



190 Red\*\*✓

191 Orange\*\*✓

192 Yellow\*\*✓

193 Hot Pink\*\*

\*Represents new selections for the 2015 season.  
 ✓ Represents finishes available on Calcutta, Kantan and Tamiami.

TEXTURED



149 Versailles

140 Pompeian Gold

179 Fierro

168 Laurel

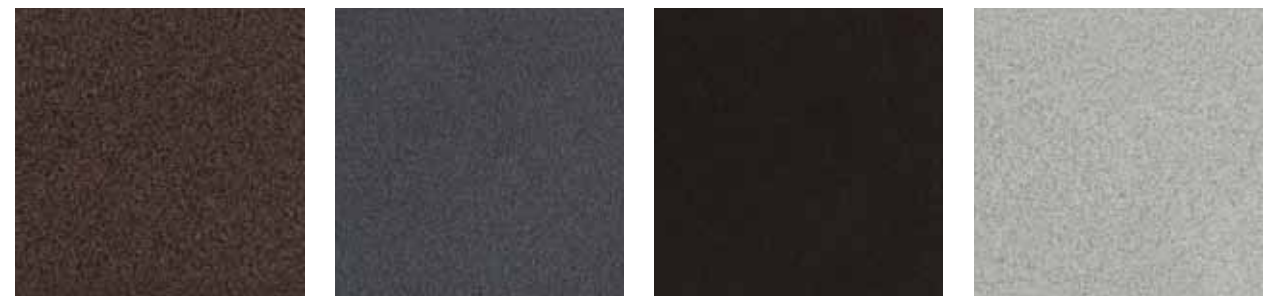


163 Sea Glass

174 Caper

167 Night

070 Platinum\*



181 Java II\*

182 Textured Pewter\*

183 Bronze\*

184 Driftwood\*



185 Black Ember\*

170 Marine

169 Coffee

160 Latte

\*Represents new selections for the 2015 season.

# RESINWEAVES AND TEAK



Shown above Southampton in Sage Resinweave®.



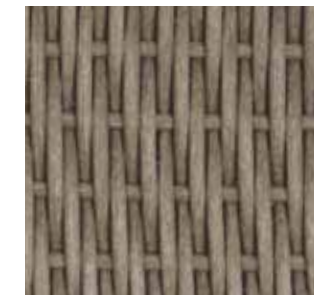
Moca for Elements



Smoke for Escape



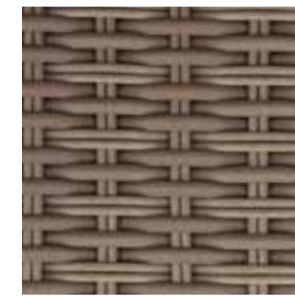
Stone for Flight



Sandal for Fremont Woven



Bronze for Fusion



Sandal for Il Viale



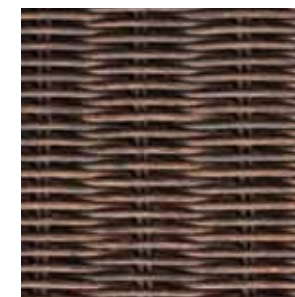
Chocolate for Parkway Modular



Sage for Southampton



Seagull for Southampton



Sienna for Southampton



Natural Teak