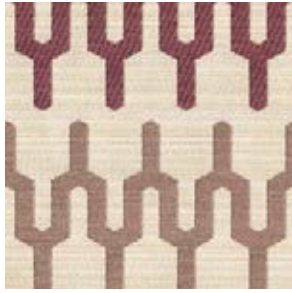




FABRICS & FINISHES

Suncloth® Fabric	202
Versatex® Mesh	208
Textiline® Straps	210
Parabolic® Sling	211
Suncloth® Straps	211
Resinweaves & Teak	213
Straps	214
Finishes	215

Suncloth® Fabric Collection



1140 Granada Helio (C)*



1138 Timberland Helio (C)*



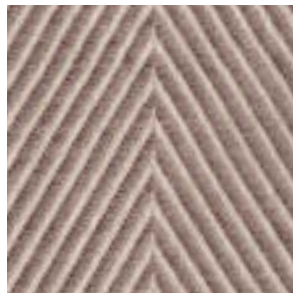
1139 Casablanca Helio (C)*



1075 Cafe Au Lait (A)
Richard Frinier Collection For Brown Jordan



667 Seashell (A)



1137 Chevron Chic Helio (B)*



827 Oyster (A)



1141 Shinoda Helio (C)*



1151 Timberland Citron (C)*



1150 Prism Citron (C)*



1152 Chevron Chic Citron (B)*



830 Maize (A)



995 Calm (A)
Richard Frinier Collection For Brown Jordan



1147 Casablanca Spa (C)*



1148 Papyrus Spa (B)*



1149 Brussels Spa (C)*

Suncloth® Fabric Collection



1158 Dash Kiwi (C)*



1153 Chevron Chic Salt (B)*



1160 Cabana Stripes Kiwi (C)*



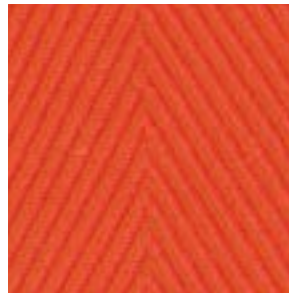
1159 Strata Kiwi (C)*



1156 Casablanca Mandarin (C)*



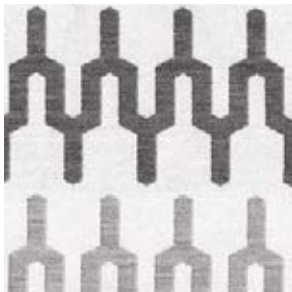
1157 Prism Mandarin (C)*



1162 Chevron Chic Flame (B)*



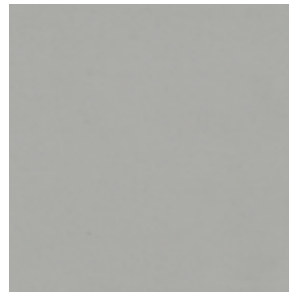
1161 Ophelia Flame (C)*



1143 Granada Mist (C)*



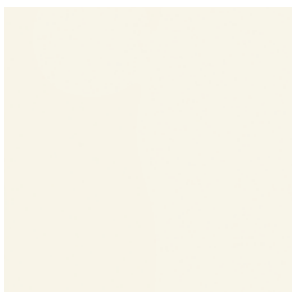
1142 Chevron Chic Mist (B)*



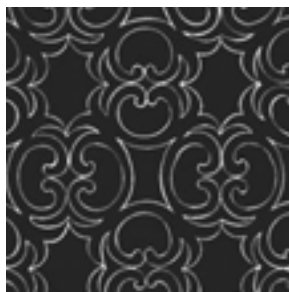
818 Morning Fog (A)



820 Morro (A)



676 High Noon (A)



1144 Arabesque Alabaster (C)*



1145 Casablanca Noir (C)*



1146 Chevron Chic Noir (B)*

*Represents new selections for 2014 season.

Suncloth® Fabric Collection



1154 Saxon Tango (C)*



1155 Infinity Tango (C)*



1058 Summer Grey (B)



1047 Woodsmoke (C)



996 Cream (A)
Richard Frinier Collection For Brown Jordan



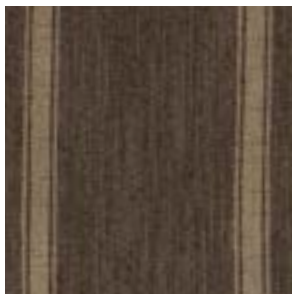
971 Sand Dune (A)
Richard Frinier Collection For Brown Jordan



1092 Seaboard Stripes (A)



1060 Summer Black (B)



1134 Park Ave (A)*
Richard Frinier Collection For Brown Jordan



1136 Park Way (A)*
Richard Frinier Collection For Brown Jordan



1135 Park Lane (A)*
Richard Frinier Collection For Brown Jordan



1163 Bay Leaf (A)*
Richard Frinier Collection For Brown Jordan



1132 Espadrille (A)*
Richard Frinier Collection For Brown Jordan



1133 Esplanade (A)*
Richard Frinier Collection For Brown Jordan



1130 Linen Gravel (A)*
Richard Frinier Collection For Brown Jordan



1131 Linen Sand (A)*
Richard Frinier Collection For Brown Jordan

*Represents new selections for 2014 season.

Suncloth® Fabric Collection



998 Cool (A)
Richard Frinier Collection For Brown Jordan



999 Light House (A)
Richard Frinier Collection For Brown Jordan



1043 Aquamarine (A)



726 Pacific (A)



1095 Esprit (A)



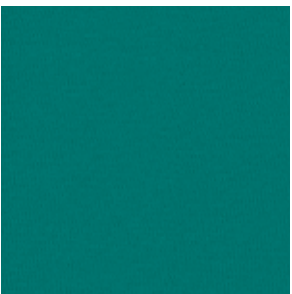
1112 Splash (A)



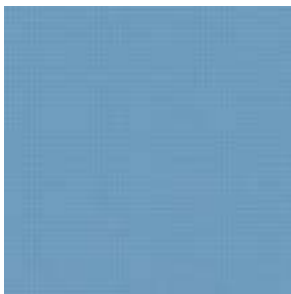
1096 Poolside (A)



727 Spring (A)



1083 Bermuda (A)



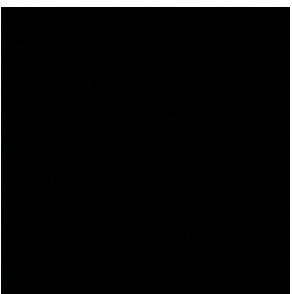
782 Bay Blue (A)



1059 Summer Indigo (B)



1088 Slate (A)
Richard Frinier Collection For Brown Jordan



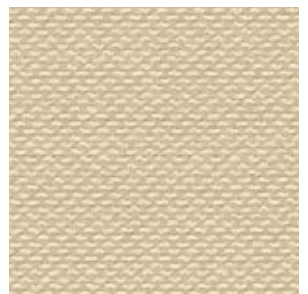
817 Night Sky (A)



822 Admiral (A)



1007 Cape Charles (A)
Richard Frinier Collection For Brown Jordan



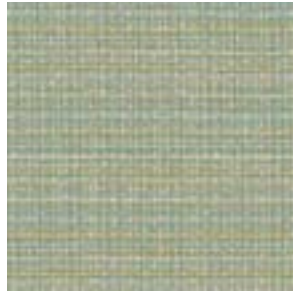
765 Coronado (B)
Richard Frinier Collection For Brown Jordan

*Represents new selections for 2014 season.

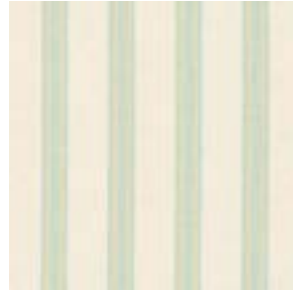
Suncloth® Fabric Collection



1002 Beach House (A)
Richard Frinier Collection For Brown Jordan



1097 Fiji (B)



1000 Seaside (A)
Richard Frinier Collection For Brown Jordan



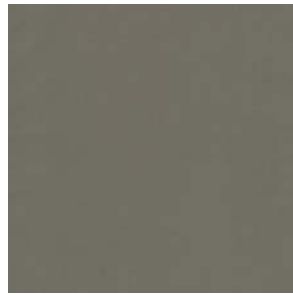
997 Serene (A)
Richard Frinier Collection For Brown Jordan



977 Pebble (B)
Richard Frinier Collection For Brown Jordan



1129 Linen Earth (A)*
Richard Frinier Collection For Brown Jordan



819 Camden (A)



1086 Burnt Willow (C)
Richard Frinier Collection For Brown Jordan



1076 Cappuccino (A)
Richard Frinier Collection For Brown Jordan



1078 Caffè (A)
Richard Frinier Collection For Brown Jordan



1045 Misty Morning (B)



1077 Moca (A)
Richard Frinier Collection For Brown Jordan



1091 Trek (A)



964 Wisteria Lane (B)



1042 Moonscape (A)



1064 Bleubell Blossom (C)

*Represents new selections for 2014 season.

Suncloth® Fabric Collection



815 Boulder (A)



813 Bajada (A)



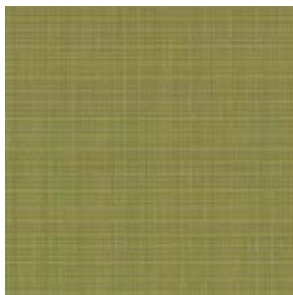
674 Jakarta (A)



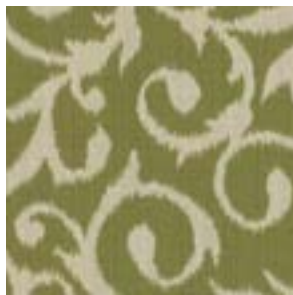
1100 Wild Currant (B)



1066 Honeybell Blossom (C)



966 Melon (A)

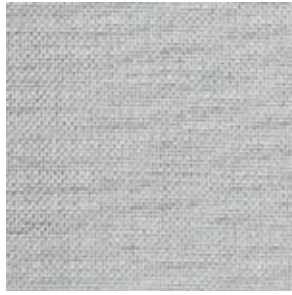


1044 Chartreuse (B)



*Represents new selections for 2014 season.
Shown above 3620-1020-C98 in Slate and Park Lane and 3620-1120-C98 in Cape Charles.

Versatex® Mesh Collection



465 Aluminum



467 Bronze



545 Caribe
Richard Frinier Collection for Brown Jordan



468 Chaparral



1080 Coco
Richard Frinier Collection for Brown Jordan



504 Desert Gold



1049 Eclipse



575 Flaxen



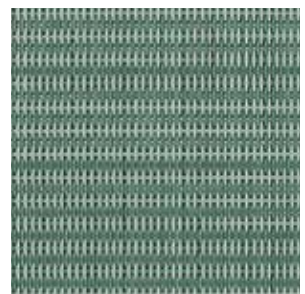
524 Greystone



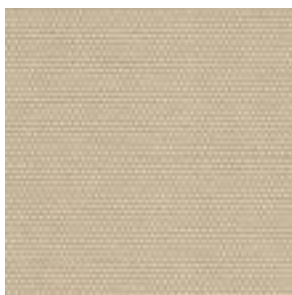
1053 Juxt



1051 Kismet



1108 Lagoon



1079 Latte
Richard Frinier Collection for Brown Jordan



991 Luminous

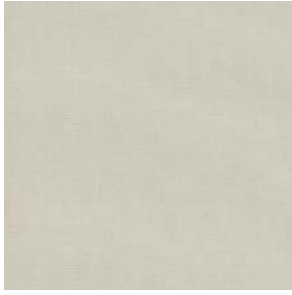


1111 Marine
Richard Frinier Collection for Brown Jordan

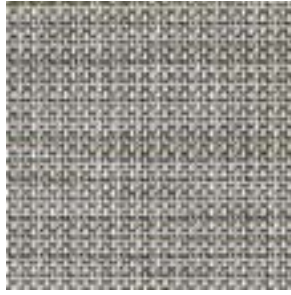


1109 Patina

Versatex® Mesh Collection



525 Putty



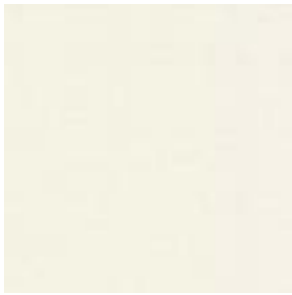
1055 Roxbury



1054 Rustic



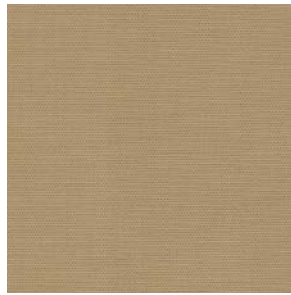
1121 Sage
Richard Frinier Collection for Brown Jordan



1014 Salt Air
Richard Frinier Collection for Brown Jordan



543 Sandpiper
Richard Frinier Collection for Brown Jordan



981 Sandy
Richard Frinier Collection for Brown Jordan



1105 Sesame



1013 Shimmer
Richard Frinier Collection for Brown Jordan



1050 Silverlead



466 Sorrel



501 Stardust



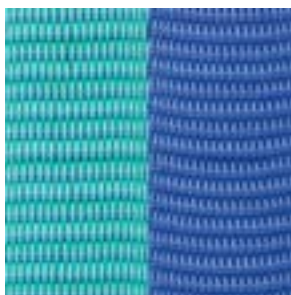
560 White Lite



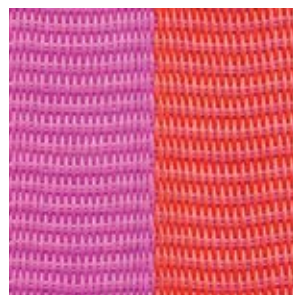
Textiline® Straps



245 Easy Blue*



246 Wiregrass Blue*



247 Lollipop*



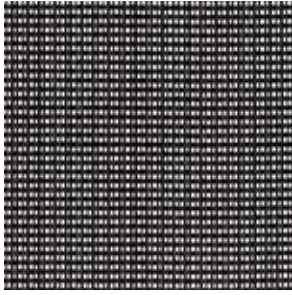
248 Mocha Winter*



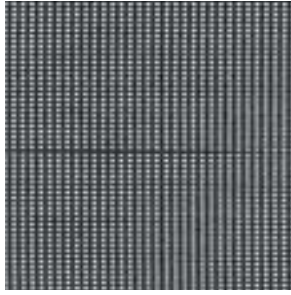
249 Bordeaux*

*Represents new selections for 2014 season.

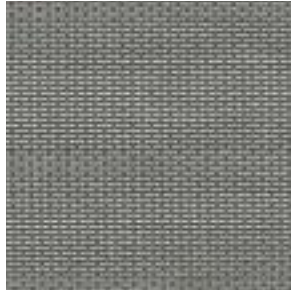
Parabolic® Sling Collection



563 Abyss



564 Fin



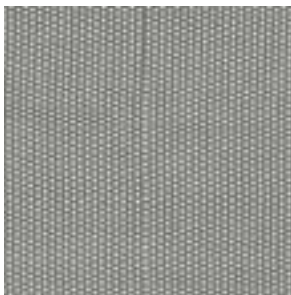
565 Flite



567 Helio



566 Strato

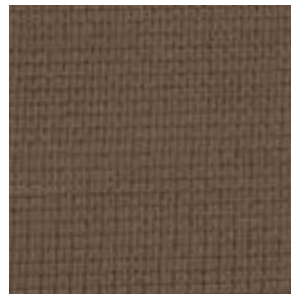


1015 Whisper

Suncloth® Straps



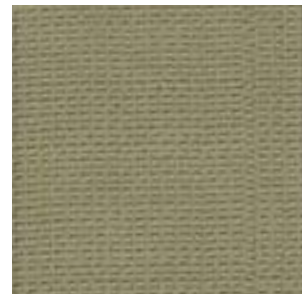
408 Coffee for Flex (1-3/4" w)



403 Coco for Flex (1-3/4" w)



425 Marine for Flex (1-3/4" w)
436 Marine for Kantan II (5/8" w)



476 Sage for Flex (1-3/4" w)
471 Sage for Kantan II (5/8" w)



Bronze for Fusion



Chocolate for Parkway Modular



Dusk for Campaign Woven



Sienna for Southampton



Moca for Elements



Bark for Papillon



Grove for Del Mar



Willow for Tangiers

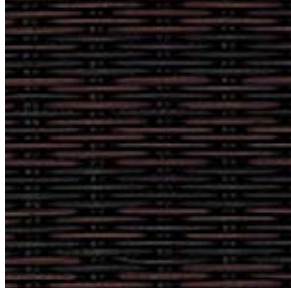


Timber for Veranda

Resinweaves and Teak



Dusk for Campaign Woven



Sumatra for Campaign Woven



Grove for Del Mar



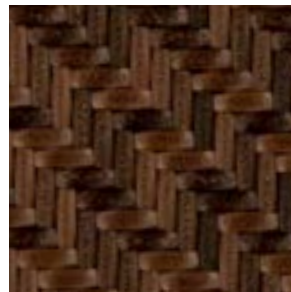
Moca for Elements



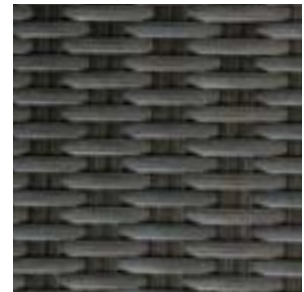
Stone for Flight



Bronze for Fusion



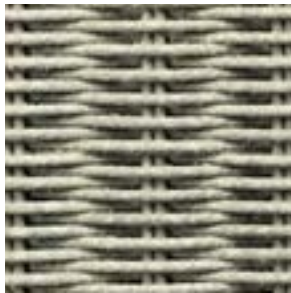
Bark for Papillon*



Chocolate for Parkway Modular*



Sepia for Quantum Woven*



Sage for Southampton*



Sienna for Southampton*



Willow for Tangiers



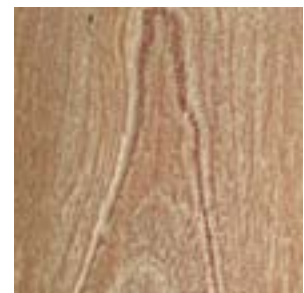
Timber for Veranda



Natural Teak



Gray Teak

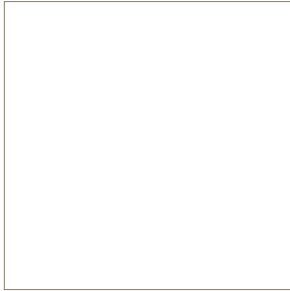


Calcimine Eucalyptus for Coloma*

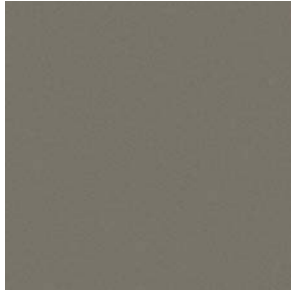
*Represents new selections for 2014 season.

Straps

SMOOTH VINYL STRAP



449 White Lite 2" Strap



288 Mica 2" Strap



257 Henna 2" Strap



437 Black Jade 2" Strap

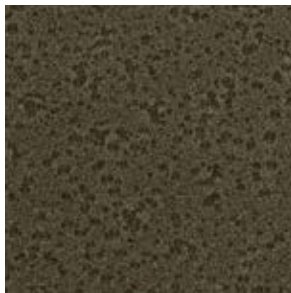


253 Kashmir 2" Strap

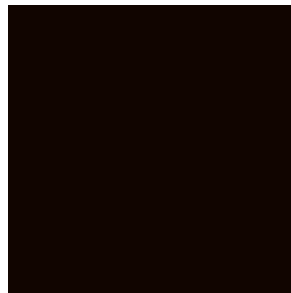
TEXTURED VINYL STRAP



313 Java 2" Strap

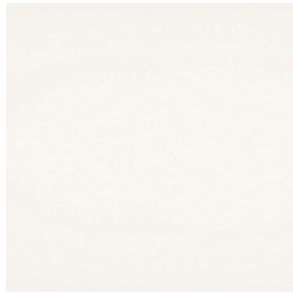


363 Versailles 2" Strap



353 Night 2" Strap

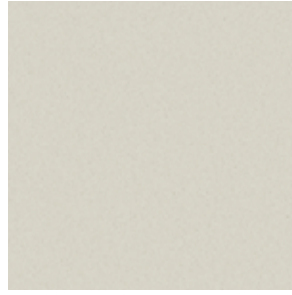
SIGNATURE SMOOTH



55 White Lite



156 Pure
Richard Frinier Collection For Brown Jordan



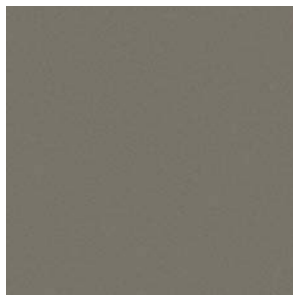
157 Shade
Richard Frinier Collection For Brown Jordan



160 Latte
Richard Frinier Collection For Brown Jordan



89 Titanium



113 Mica



161 Storm



173 Pistachio*



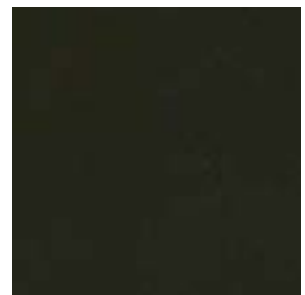
163 Sea Glass



168 Laurel



162 Coco
Richard Frinier Collection For Brown Jordan



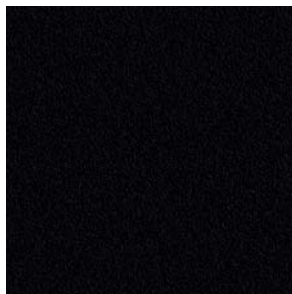
174 Caper*



14 Black Jade



170 Marine
Richard Frinier Collection For Brown Jordan



167 Night



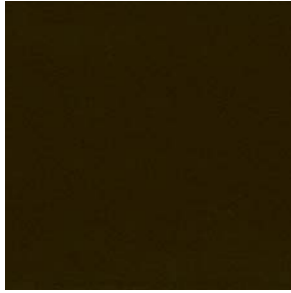
175 Sangria*

*Represents new selections for 2014 season.

Finishes



169 Coffee
Richard Frinier Collection For Brown Jordan



138 Kashmir

PREMIUM NATURAL



117 Jasper



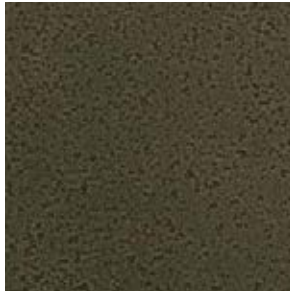
176 Vintage*
Richard Frinier Collection For Brown Jordan

PREMIUM METAL



150 Pewter

SIGNATURE TEXTURED



149 Versailles



101 Java



140 Pompeiiian Gold



158 Downspout



179 Fierro*

*Represents new selections for the 2014 season.

A Brown Jordan Advantage

Unique Multi-step Powder Coat Technique

Each piece of Brown Jordan aluminum furniture undergoes a rigorous finishing treatment that results in a beautiful, lasting piece of furniture.

BUFF AND GRIND

Assembled frames are prepared for painting via a meticulous process in which welded joints are ground to achieve uniform dimension and the basis of a final, aesthetically pleasing appearance. Each frame is then sanded, buffed, and polished to achieve a smooth surface finish, allowing for better adhesion of the final powder coat.

FIVE-STAGE PRE-TREATMENT

Each frame is washed in a chemical solution bath to remove any particles remaining from the buff and grind process, as well as any oil residue. The bath is followed by a clean water rinse.

After rinsing, the frame is treated with Chromo-coat. Untreated aluminum is a porous material with naturally occurring microscopic fissures, clefts, cracks, and slits. The Chromo-coat solution acts as a sealant as well as a bonding agent for the final powder coat finish.

After the Chromo-coat bath, the frame is rinsed again in cold water to remove any remaining chemicals, then heat dried.

HYBRID BASE COAT PRIMER SEALANT

Hybrid primer sealant is an epoxy / polyester blend that prepares the frame to receive its finish coat. The epoxy acts as a superior bonding agent that is specially formulated to adhere to metal. During the final cure, the epoxy will not reflow, resulting in a harder topcoat surface that protects the metal from corrosion.

The polyester does reflow: while the epoxy grabs the metal, the polyester grabs the top powder coat. The outcome is an advanced, integrated bond that results in superior resistance to paint delamination while allowing for improved color and gloss retention.

The primer coat alone, even before application of the final powder coat, achieves superior UV and salt spray resistance far exceeding industry standards.

POWDER COATING

The Ultra Fuse™ powder coat final finish is applied with an electrostatic technique that creates a complete and uniform coating on all areas of the frame, including the bends and corners. The result is an attractive, durable, high-quality finish that will not flake, peel, or blister.



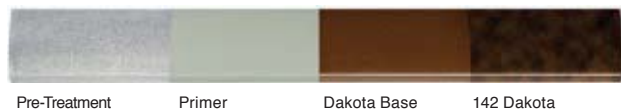
SIGNATURE FINISH



METAL PREMIUM FINISH



PREMIUM NATURAL FINISH



Numerous talented furniture designers envisioned the collections in this catalog:

Jonathan Bax, Michael Berman, Michael Burrige, John Caldwell, Jay Franks, Richard Frinier, Drew Haeffele, Walter Hargrove, Lindsey Helgeson, Richard Holbrook, Gia Lim and generations of Brown Jordan teams who created the classics still available today.

PUBLISHED SEPT 2013

Brown Jordan reserves the right to make minor design changes or modifications and to discontinue furniture items, finish colors, and lace, strap, and resinweave colors without notice. Printed colors cannot be guaranteed for accuracy. It is the policy of Brown Jordan to apply for trademarks and design and utility patents during product development. These trademarks and patents are rigorously enforced.